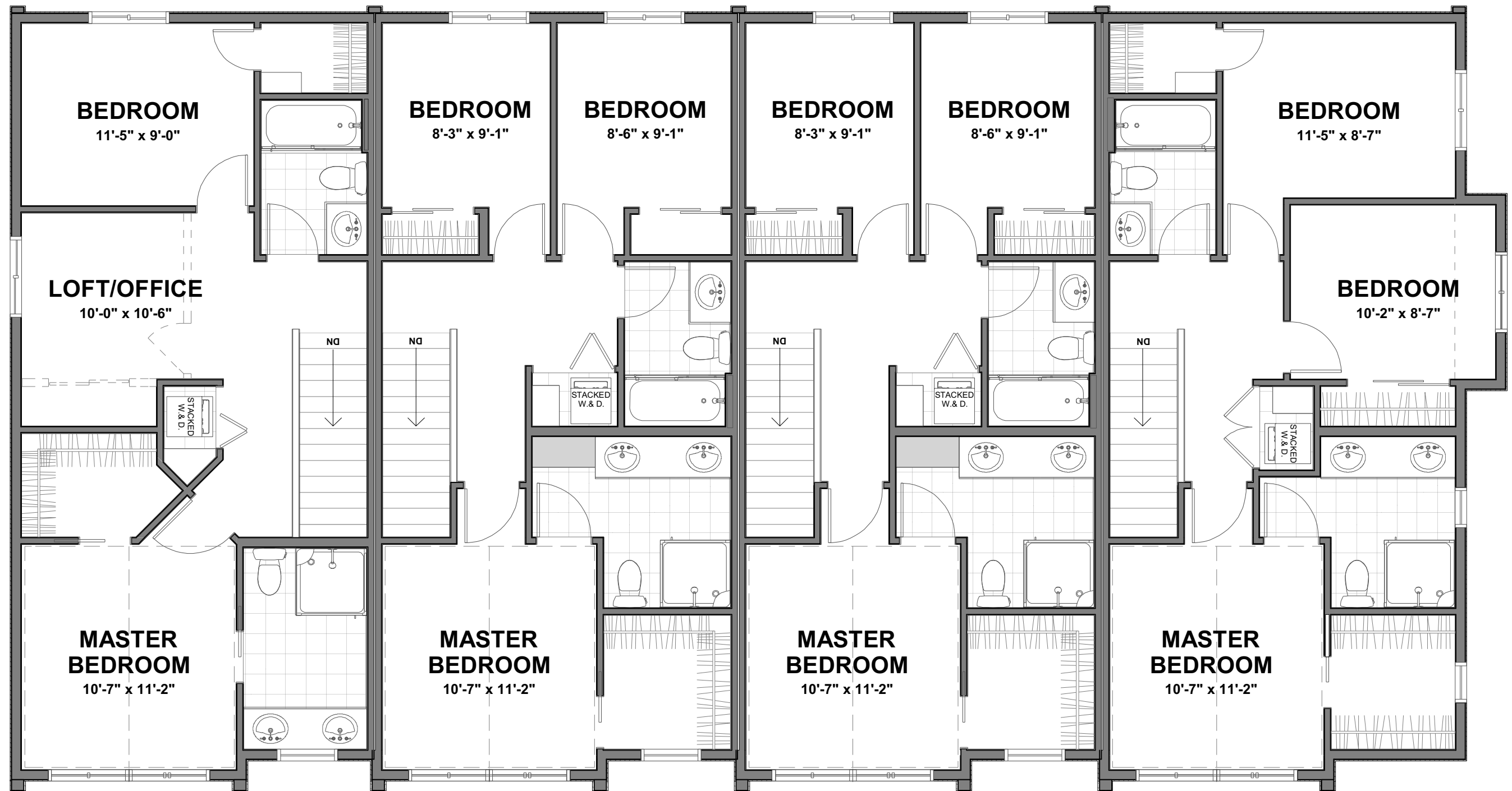




Signature

ON 50th

- 4 modern townhomes approx 1300 square feet each.
- 3 bedrooms above grade (#5105 has optional 3 bedrooms, or 2 bedrooms + loft).
- Hardwood main, carpeted upper and lower (Silk brand carpet)
- 12 foot high vaulted master bedroom ceiling.
- Gas fireplace.
- Feature stairwell floor to ceiling glass wall.
- Open riser solid wood stairs.
- Full custom cabinetry with floor to ceiling kitchen cabinets.
- Quartz counters throughout.
- 4 different cabinetry finishes to chose from.
- Fisher and Paykel appliance package.
- Grohe fixtures throughout.
- Pre-wired for dual cat5 and coax to rooms for centralized media.
- Basement bar w/24" fridge.
- Fully 9.36 energy compliant with high efficiency mechanical including HRV.
- All LED pot lights throughout.



5105 - 6th. St. SW
2nd. Floor = 678 ft.²

5103 - 6th. St. SW
2nd. Floor = 678 ft.²

5101 - 6th. St. SW
2nd. Floor = 678 ft.²

703 - 50th. Av. SW
2nd. Floor = 697 ft.²



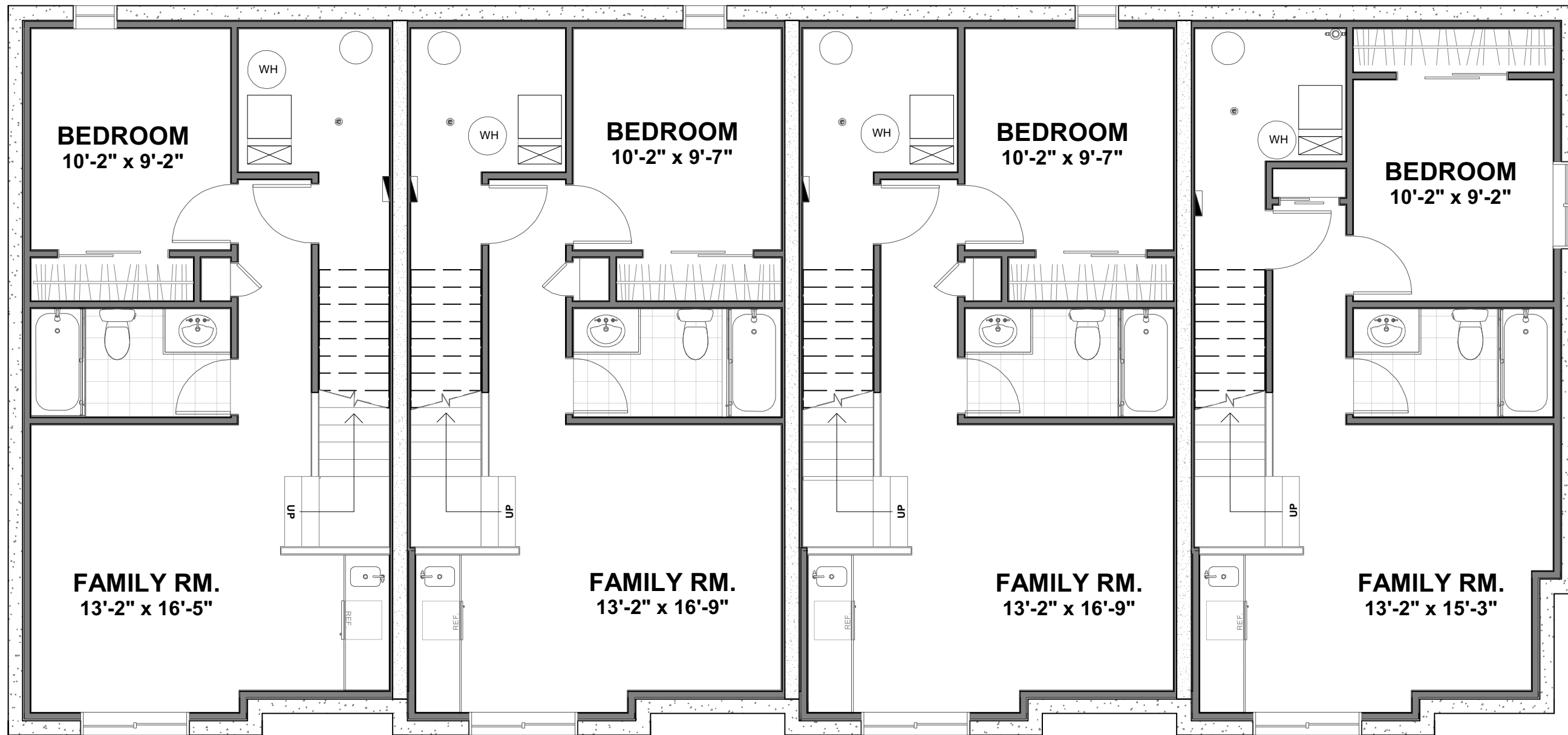
5105 - 6th. St. SW
 Main Floor = 598 ft.²
 2nd. Floor = 678 ft.²
 Basement = 503 ft.²
 Total Unit = 1779 ft.²

5103 - 6th. St. SW
 Main Floor = 598 ft.²
 2nd. Floor = 678 ft.²
 Basement = 518 ft.²
 Total Unit = 1794 ft.²

5101 - 6th. St. SW
 Main Floor = 598 ft.²
 2nd. Floor = 678 ft.²
 Basement = 518 ft.²
 Total Unit = 1794 ft.²

703 - 50th. Av. SW
 Main Floor = 593 ft.²
 2nd. Floor = 697 ft.²
 Basement = 494 ft.²
 Total Unit = 1784 ft.²





5105 - 6th. St. SW
Basement = 503 ft.²

5103 - 6th. St. SW
Basement = 518 ft.²

5101 - 6th. St. SW
Basement = 518 ft.²

703 - 50th. Av. SW
Basement = 494 ft.²

